



Somerford Way, London, SE16 6QW

Located in the heart of Rotherhite, next to the greenery of Russia Dock Woodland and a short stroll from Canada Water underground station as well as the River Thames is this well presented four bedroom house.

The property boasts the generous and naturally bright living room leading into the west facing garden, a modern separate kitchen, and the guest washroom downstairs. On the first floor are the first two bedrooms and family bathrooms. On the second and top floor are the remaining two double bedrooms with plenty of storage space and the second family bathroom / shower room.

The property also benefits from an allocated off street parking space.

Council Tax Band E

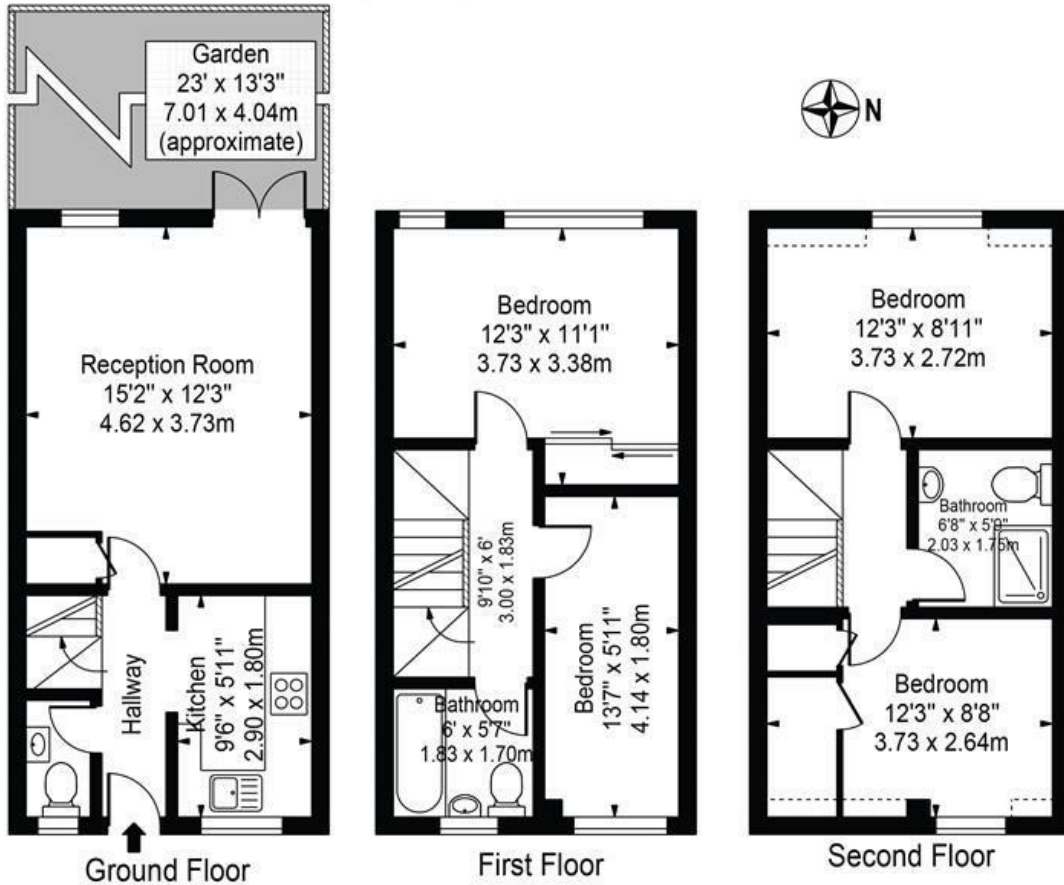
£3,700 Per month

- Private West Facing Garden
- Four Bedroom House
- Guest Washroom and Two Family Bathroom
- Private Allocated Off Street Parking Space
- Naturally Bright Living Room
- Modern Kitchen

Alex & Matteo
ESTATE AGENTS

Somerford Way

Approx. Total Internal Area 928 Sq Ft - 86.21 Sq M
 (Including Restricted Height Area)
 Approx. Gross Internal Area 917 Sq Ft - 85.19 Sq M
 (Excluding Restricted Height Area)



For Illustration Purposes Only - Not To Scale

This floor plan should be used as a general outline for guidance only and does not constitute in whole or in part an offer or contract. Any intending purchaser or lessee should satisfy themselves by inspection, searches, enquiries and full survey as to the correctness of each statement. Any areas, measurements or distances quoted are approximate and should not be used to value a property or be the basis of any sale or let.

